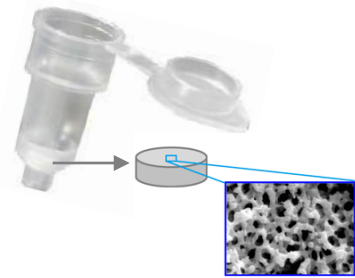
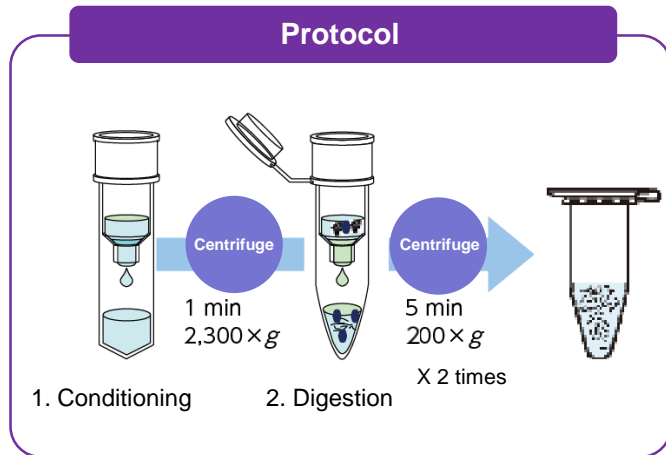


## **NEW** MonoSpin<sup>®</sup> Trypsin HP

The MonoSpin Trypsin HP (High Performance) is a trypsin-immobilized monolithic silica delivering rapid and highly efficient tryptic digests of proteins. Trypsin is densely immobilized on to the monolithic silica resulting in higher efficiency of tryptic digests of proteins. **The required operation time is approximately 15 minutes.**



Monolithic Silica Gel

Version	Previous	New
Gel I.D.	4.2 mm	<b>4.8 mm</b>
Gel Length	1.5 mm	<b>5 mm</b>

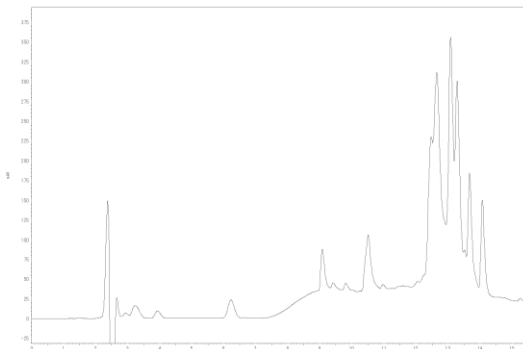
\* The monolithic skeleton structure and coverage density of trypsin is the same between the previous and new version. However, the absolute amount of trypsin is more available in the new version as the size of the monolithic silica gel is larger than the previous version.

### Comparison of Performance between MonoSpin Trypsin (previous version) and MonoSpin Trypsin HP (New)

#### MonoSpin Trypsin (previous version)

Digestion of b-Casein

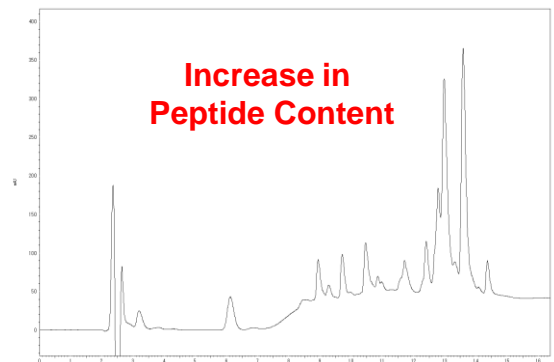
100 x g 5 min x 2 times



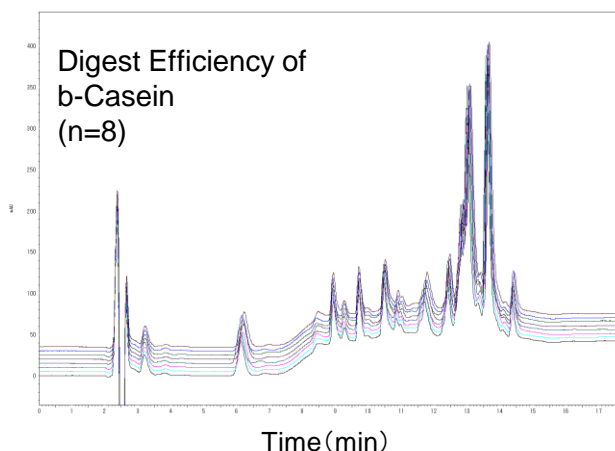
#### MonoSpin Trypsin HP (New)

Digestion of b-Casein

200 x g 5 min x 2 times



## Reproducibility of Digest Efficiency



MonoSpin Trypsin HP offer extremely high reproducibility for digestion of proteins.

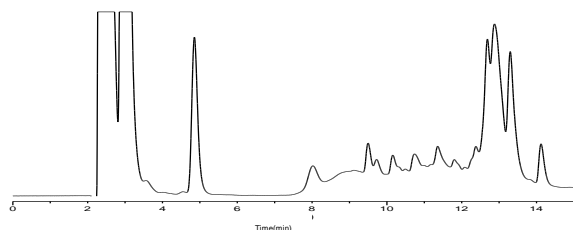
\* To perform stable digestion of proteins, please make sure to reduce and alkylate the sample prior to using MonoSpin Trypsin HP.

## Comparison of Digest Efficiency between MonoSpin Trypsin HP and In-Solution Digestion

### In-Solution Digestion

Digestion of b-Casein

18 hours



### MonoSpin Trypsin HP (New)

Digestion of b-Casein

200 x g 5 min x 2 times

**Total Operation Time = approx. 15 mins**

**Digest Efficiency is nearly equal to In-Solution Digestion, but with Rapid Results**



## 【Ordering Information】

Description	Qty	Cat.No.
MonoSpin Trypsin HP [KEEP COOL]	30 PCS	7510-11302

\* MonoSpin Trypsin HP must be refrigerated when not in use.

**GL Sciences, Inc. Japan**  
22-1 Nishishinjuku 6-Chome  
Shinjuku-ku, Tokyo,  
163-1130, Japan  
Phone: +81-3-5323-6620  
Fax: +81-3-5323-6621  
Email: [world@glsc.co.jp](mailto:world@glsc.co.jp)  
Web: [www.glsciences.com](http://www.glsciences.com)

**GL Sciences B.V.**  
De Sleutel 9  
5652 AS Eindhoven  
The Netherlands  
Phone: +31 (0)40 254 95 31  
Email: [info@glsciences.eu](mailto:info@glsciences.eu)  
Web: [www.glsciences.eu](http://www.glsciences.eu)

**GL Sciences, Inc. USA**  
4733 Torrance Blvd. Suite 255  
Torrance, CA 90503  
Phone: 310-265-4424  
Fax: 310-265-4425  
Email: [info@glsciencesinc.com](mailto:info@glsciencesinc.com)  
Web: [www.glsciencesinc.com](http://www.glsciencesinc.com)